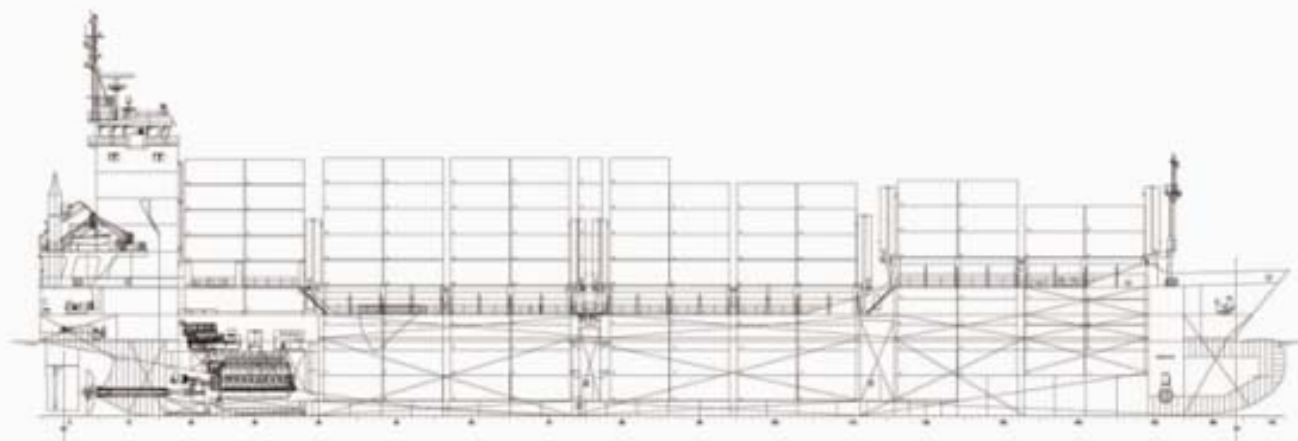



# Containership Specifications

made in Sept. 2008

(brand new)



## Classification:

GL  100 A5 E Multi Purpose Dry Cargo Ship, IW, BWM-F Equipped for Carriage of Container, SOLAS II-2, Reg.19

 MC E AUT

## Main Particulars:

Length over all: 127,00 m  
 Length between perpendiculars: 119,40 m  
 Breadth moulded: 20,40 m  
 Depth to main deck: 10,35 m  
 Draught: 7,75 m

Deadweight 8722 tdw

Gross tonnage: 7532 GT  
 Net tonnage: 3553 NT

Speed : (85% MCR) 18 kn  
 Cruising range abt. 10000 nm

## Container capacity:

	20'	40'	40' Reefer
in hold	245 TEU	116 FEU	46 FEU
on deck	479 TEU	218 FEU	109 FEU
<b>total</b>	<b>724 TEU</b>	<b>334 FEU</b>	<b>155 FEU</b>

**Homogenous 14 t/TEU 443 TEU**  
 Storage of containers of differnt size possible on deck and in hold.

Holds / Hatches: Hydr. operated folding types

Hatch	clear opening	
1	25,40 m	13,10 m
2	25,40 m	15,80 m
3	25,40 m	15,80 m

**Hold capacity abt. 420.000 cbf**

## Stack loads

In Hold 96t / 144t for TEU / FEU  
 On Hatch cover 40t / 60t for TEU / FEU

## Accommodation:

Number of single cabins : 18  
 European accommodation standard

## Propulsion:

1 Caterpillar 8M43 C diesel engine 7200 kW at 500 rpm.  
 1 Reduction gear,  
 1 Variable pitch propeller

## Electr. Power Supply (440 V, 60 Hz):

1 Shaft generator 1290 kVA  
 2 Diesel aux. alternator sets 1200 kVA each  
 1 Emergency diesel alternator set 262 kVA

## Nautical Equipment:

Gyrocompass with autopilot, Magnetic compass,  
 2 Radar plants, Echo sounder, speed log,  
 Radio station

## Miscellaneous:

1 Bow thruster  
 1 Flap rudder  
 IFO (one fuel ship) 500 cSt